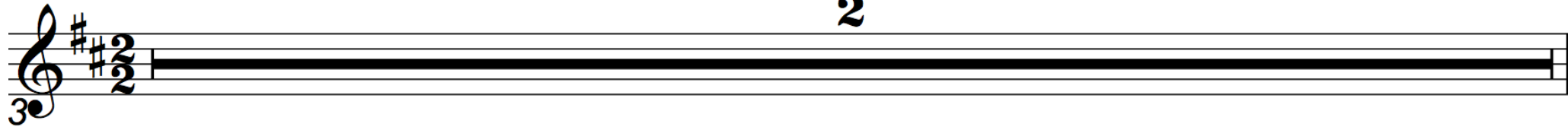


Bashan

2

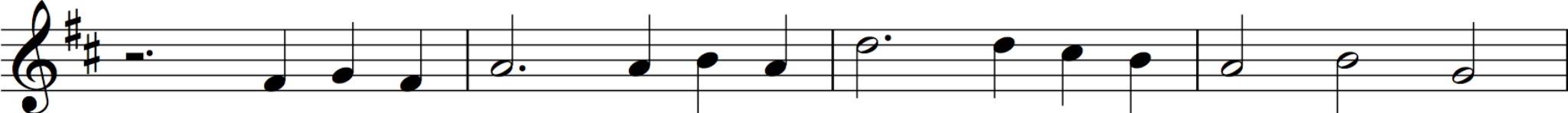


Bracondale

2

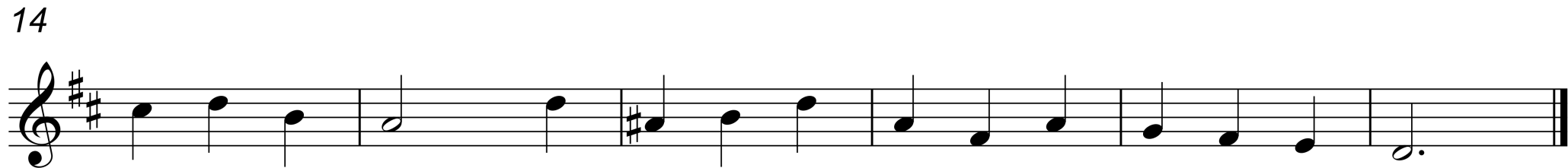
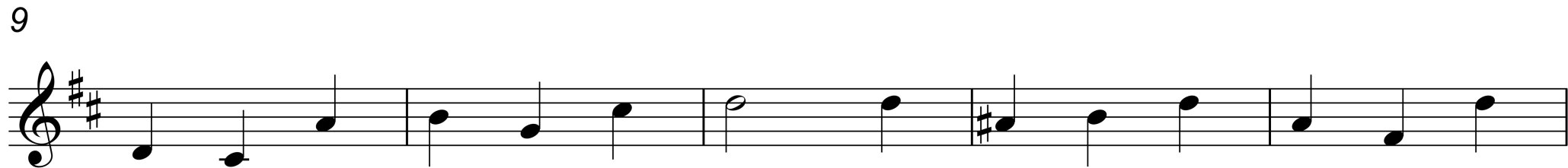
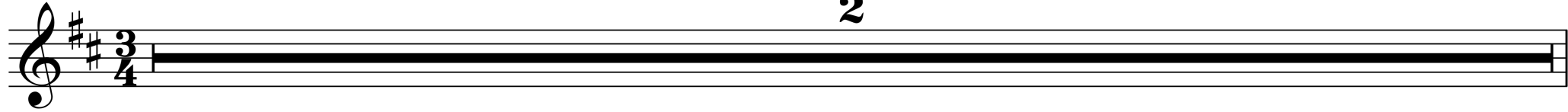


3



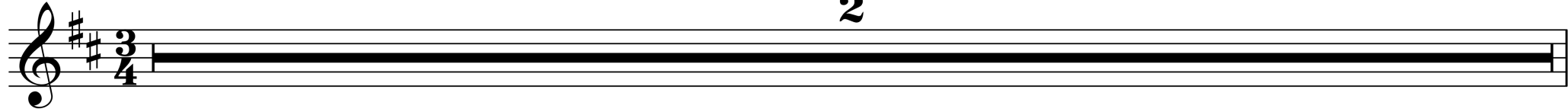
Batter Sea

2

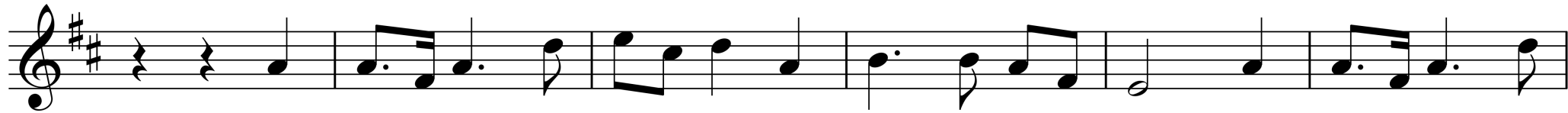


Bawardy

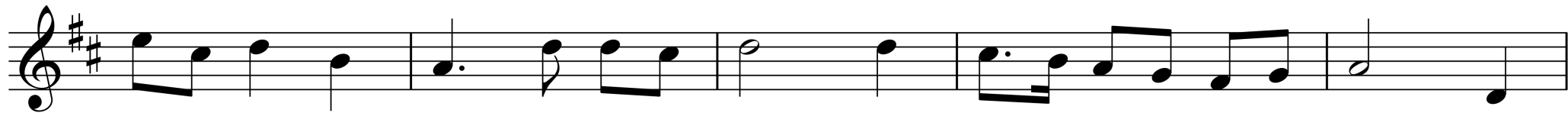
2



3



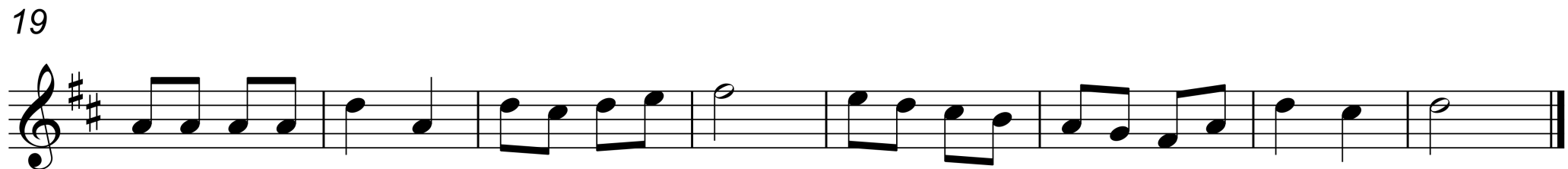
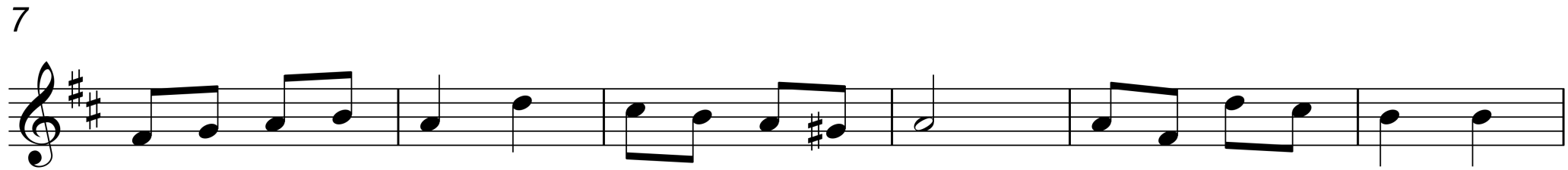
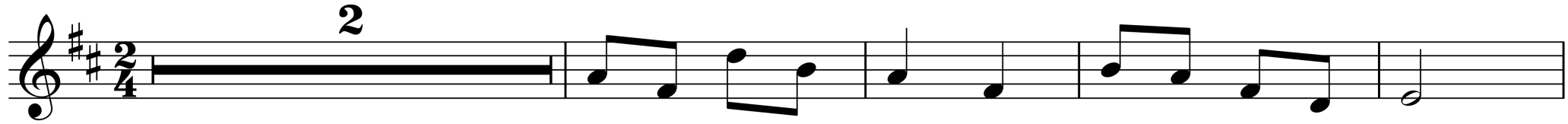
9



14



Baytown

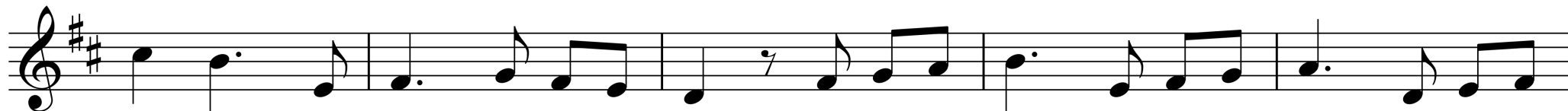


Behold Him Now

2



9



14



Believe and Obey

2



10



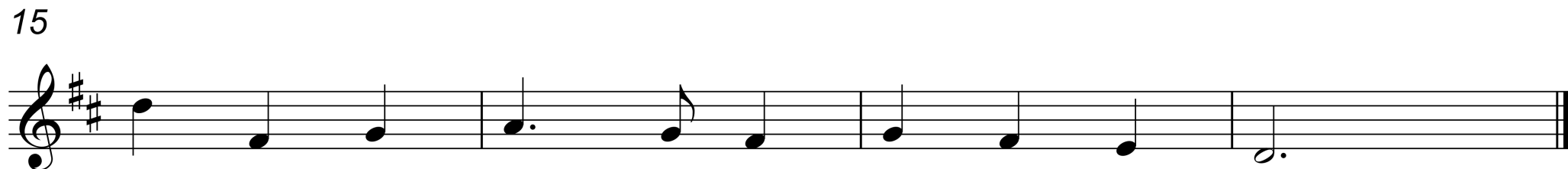
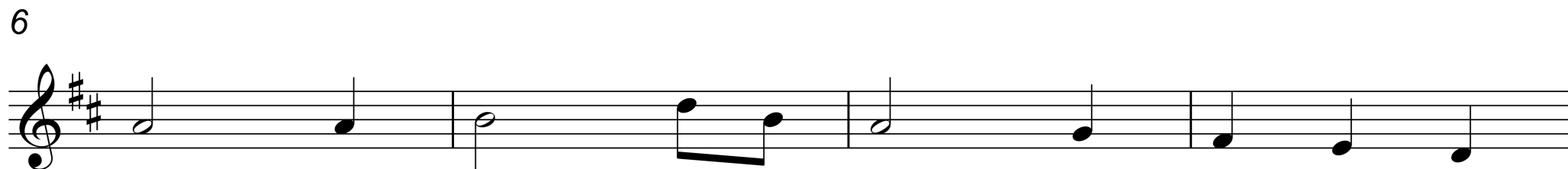
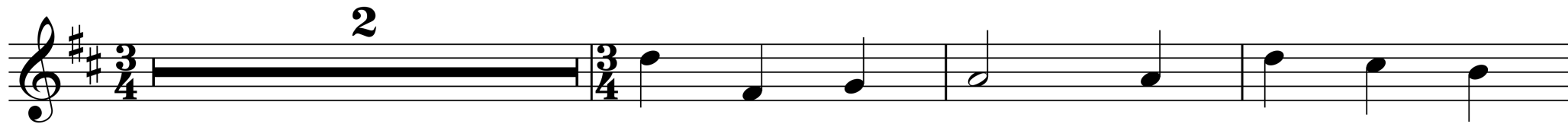
19



27

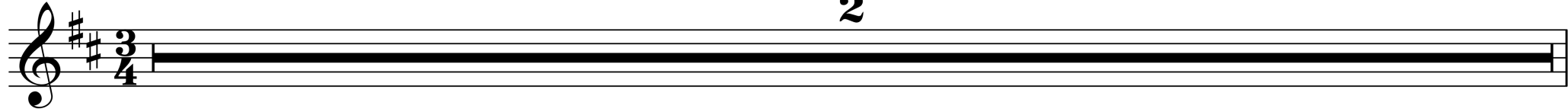


Blendon

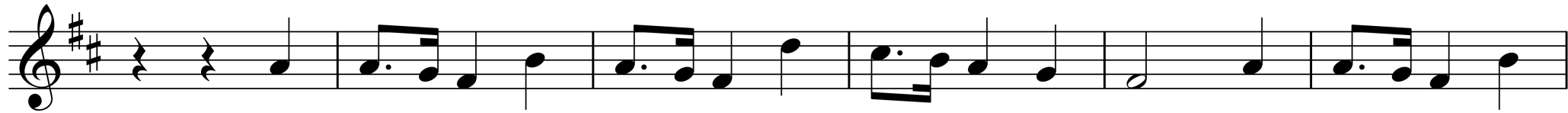


Bonar Bunk

2



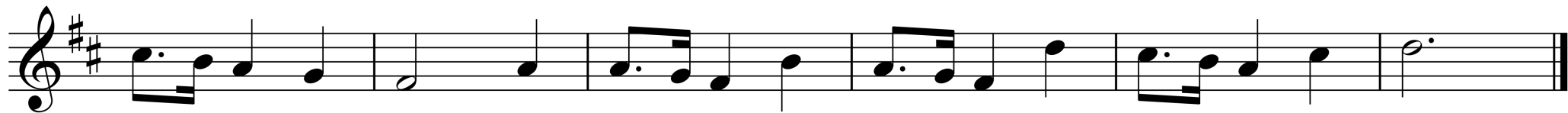
3



9



14



Bordeaux

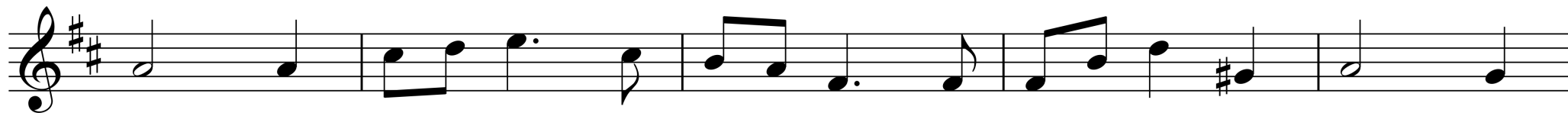
2



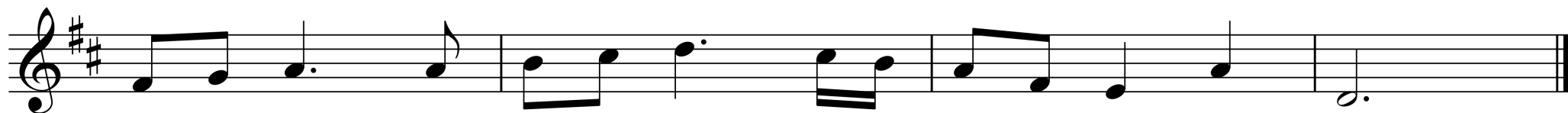
7



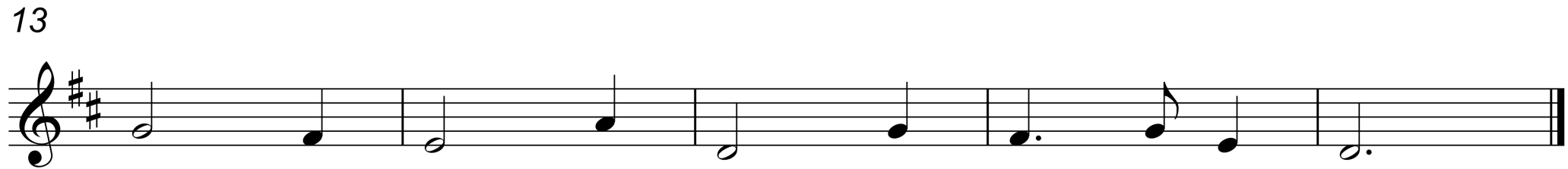
11



16

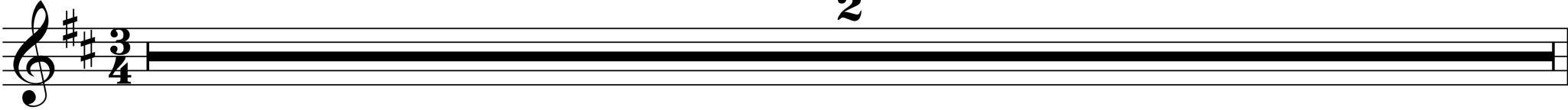


Bradford




Brotherton

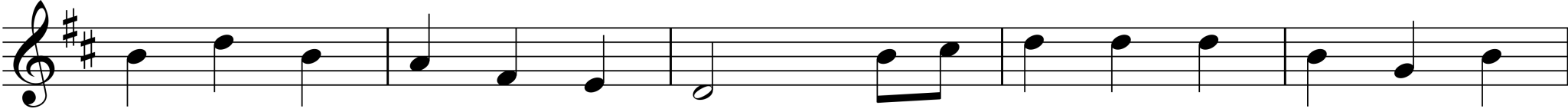
2



3



9



14



Broxburn

8

2

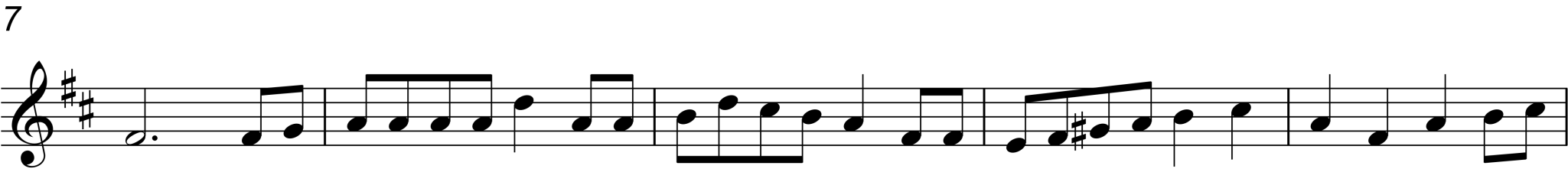
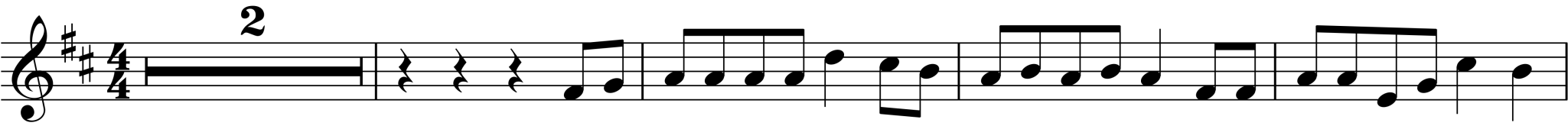
15

22

29

Musical score for 'Broxburn' in treble clef, key of D major (two sharps), 3/4 time. The score consists of five staves. The first staff begins with a treble clef, key signature, and time signature. It contains a measure with a fermata and a '2' above it, followed by a sequence of notes. The second staff starts at measure 15. The third staff starts at measure 22. The fourth staff starts at measure 29. The fifth staff ends with a double bar line.

A Rainbow on the Cloud



Aalborg

2

Musical staff with treble clef, key signature of two sharps (F# and C#), and a 4/4 time signature. The staff contains a solid black bar representing a whole rest for the entire duration of the piece.

3

Musical staff with treble clef, key signature of two sharps (F# and C#), and a 4/4 time signature. The staff contains a whole rest followed by a series of eighth and quarter notes.

10

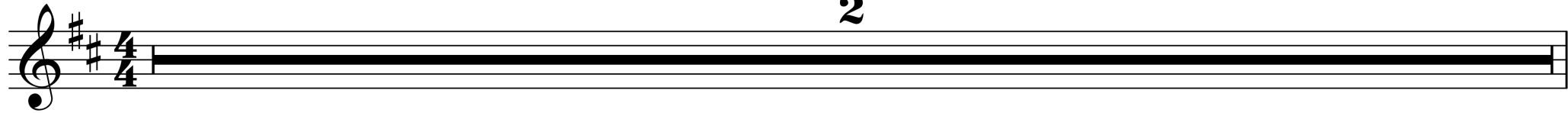
Musical staff with treble clef, key signature of two sharps (F# and C#). The staff contains a series of quarter and eighth notes.

15

Musical staff with treble clef, key signature of two sharps (F# and C#). The staff contains a series of quarter and eighth notes, ending with a quarter rest.

Baginton

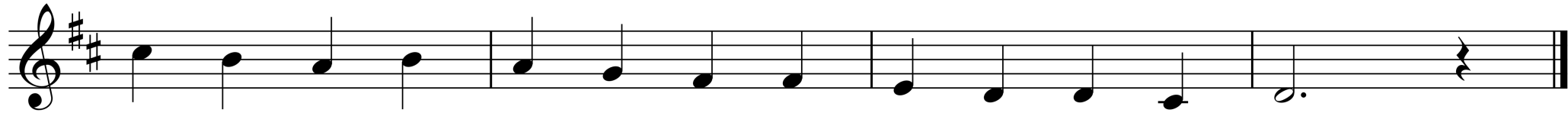
2



3

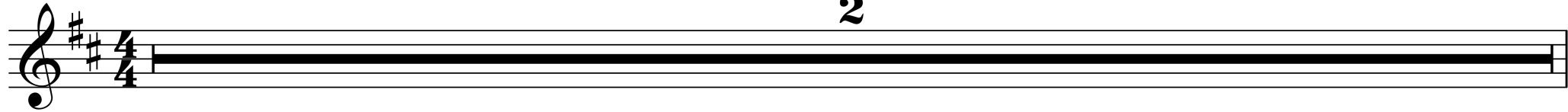


8



Beloved

2



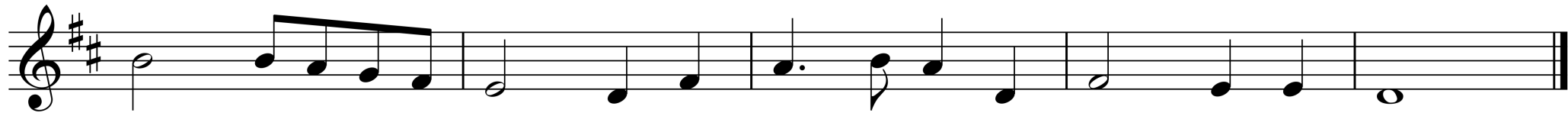
3



8



13

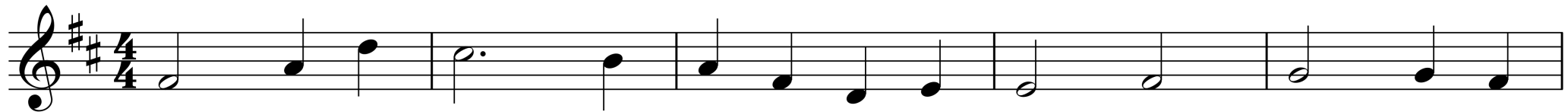


Birkdale

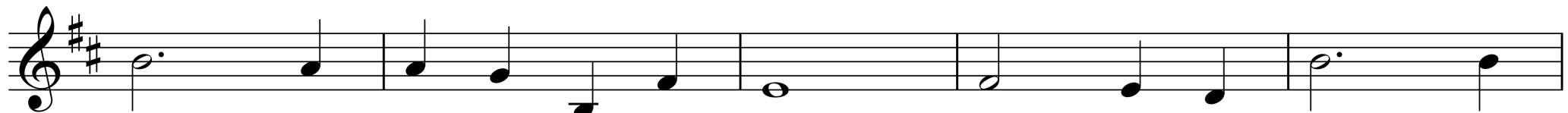
2



3



8



13

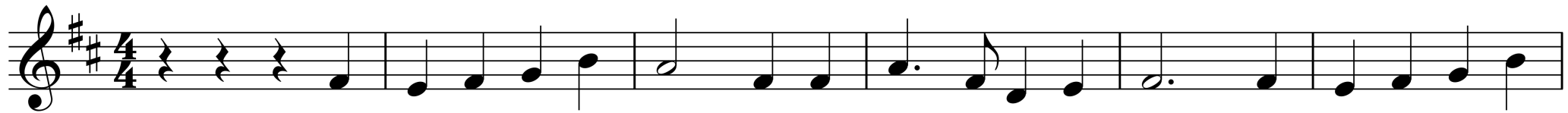


Blairgowrie

2

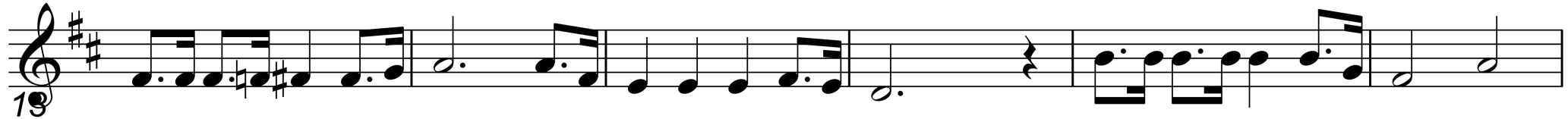


3



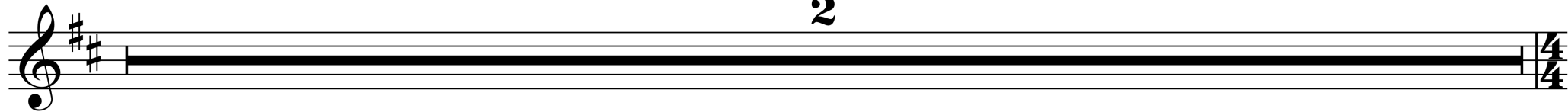
Blessed Be the Fountain

2

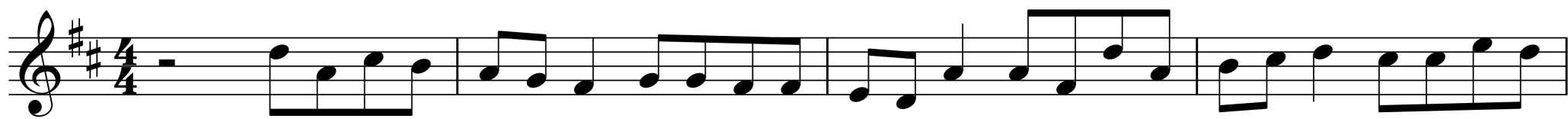


Blessed Bright and Shining Star

2



3



7

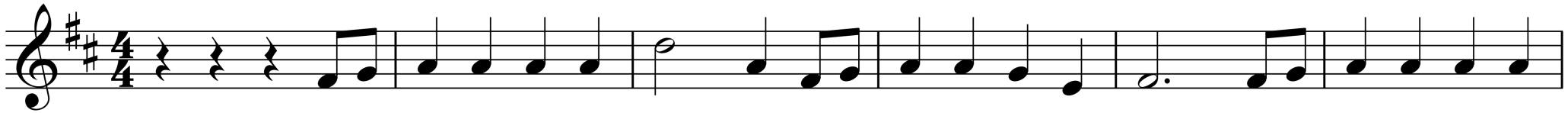


Bologna

2



3



Bor

2



3



Bovey

2



3



7

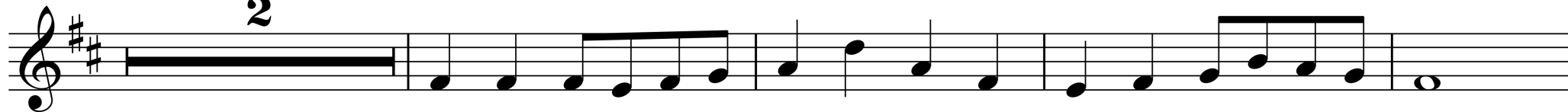


11

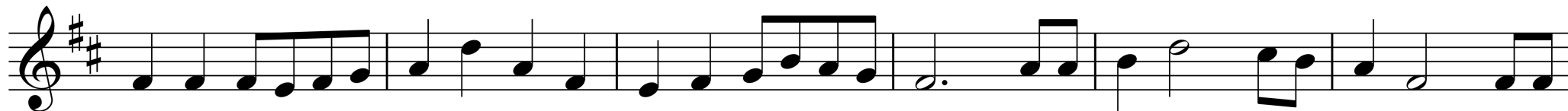


Bradbury

2



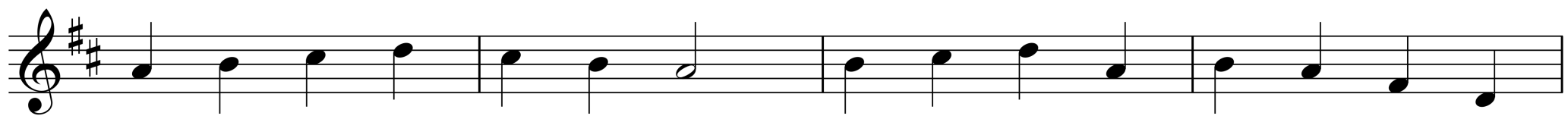
7



13



Bradbury



Bright and Beautiful

2

The image displays a musical score for the hymn "Bright and Beautiful" in G major (one sharp) and 2/4 time. The score is written on five staves, each beginning with a treble clef and a key signature of one sharp (F#). The first staff starts with a measure of a whole rest, followed by a double bar line and a measure with a fermata. The second staff begins at measure 12, the third at measure 17, and the fourth at measure 22. The fifth staff concludes the piece with a final double bar line. The melody consists of eighth and quarter notes, with some dotted rhythms and a final quarter rest.

Brighten the Corner Where You Are

2



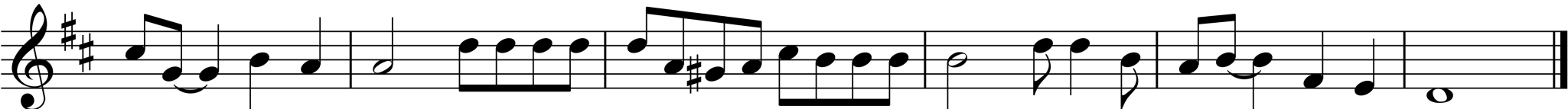
3



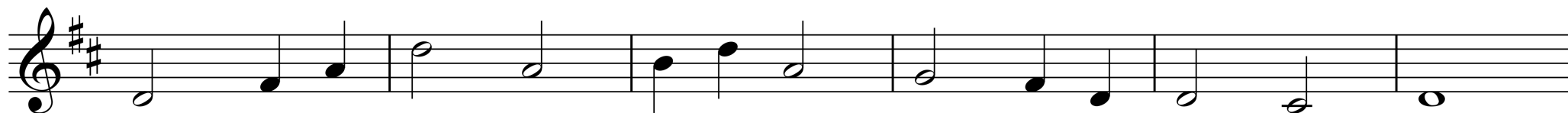
8



14



Brother James Aire



Beautiful Garden

2

3

7

12

15

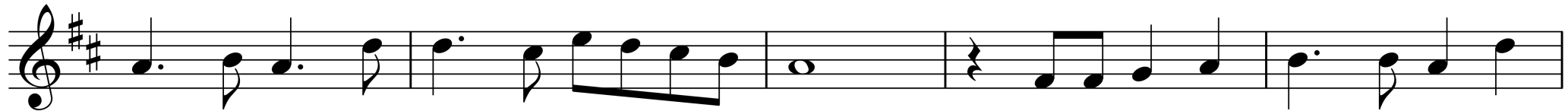
Musical score for "Beautiful Garden" (part 2). The score is written in treble clef, key signature of two sharps (F# and C#), and 6/4 time signature. The first staff is a whole rest. The second staff starts at measure 3. The third staff starts at measure 12. The fourth staff starts at measure 15. The fifth staff continues the melody. The piece concludes with a double bar line.

Blessed are the Peacemakers

2



8



13



18



Acropolis

2



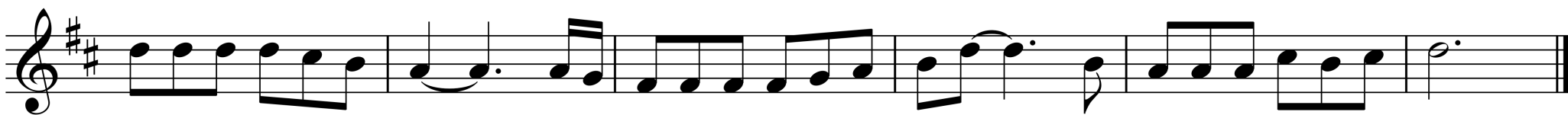
3



9

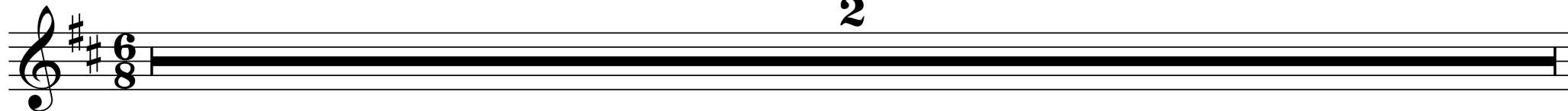


14



Beautiful Beckoning Hands

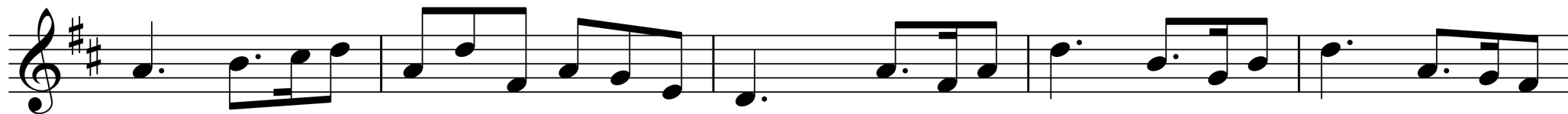
2



3



9



14



Beautiful Star

2

Musical staff with treble clef, key signature of two sharps (F# and C#), and a 6/8 time signature. The staff contains a solid black line representing a whole rest.

3

Musical staff with treble clef, key signature of two sharps, and 6/8 time signature. It contains a sequence of eighth and quarter notes.

9

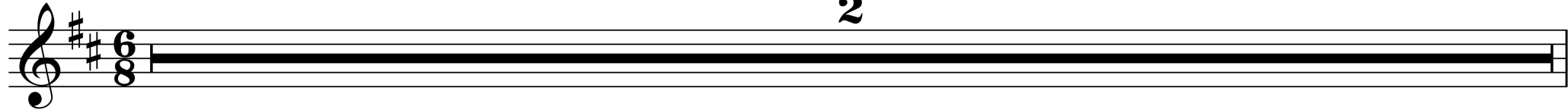
Musical staff with treble clef, key signature of two sharps, and 6/8 time signature. It contains a sequence of eighth and quarter notes.

15

Musical staff with treble clef, key signature of two sharps, and 6/8 time signature. It contains a sequence of eighth and quarter notes.

Besancon

2



3

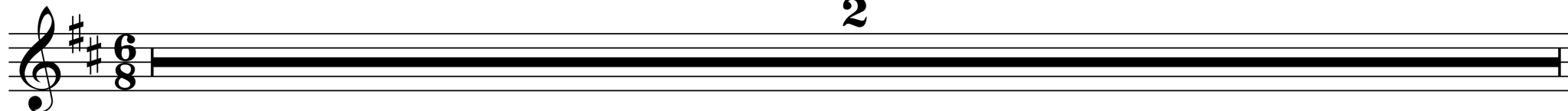


9



Bless this Hour of Prayer

2



3



9

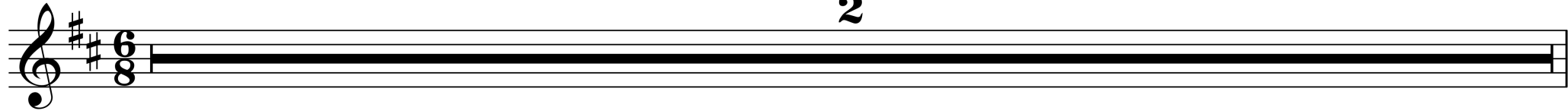


14



Blessed Hope

2



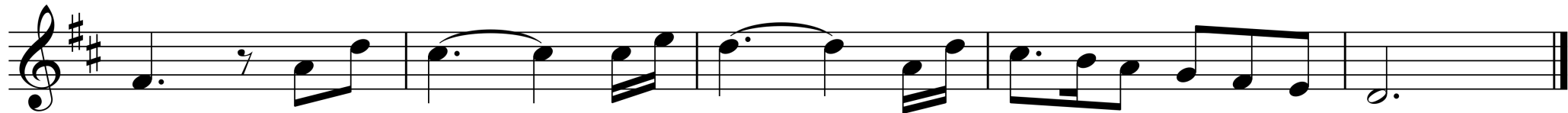
3



9

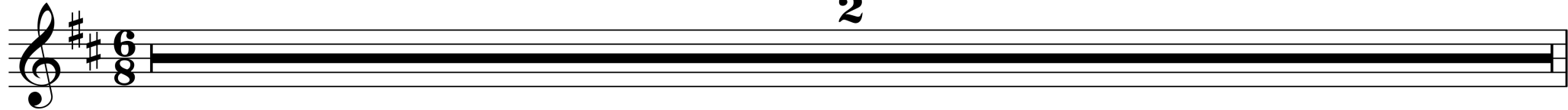


15



Brave Daniel

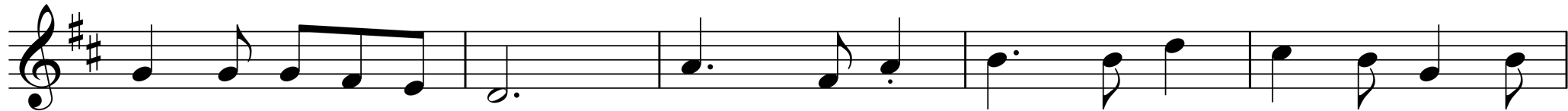
2



3



9

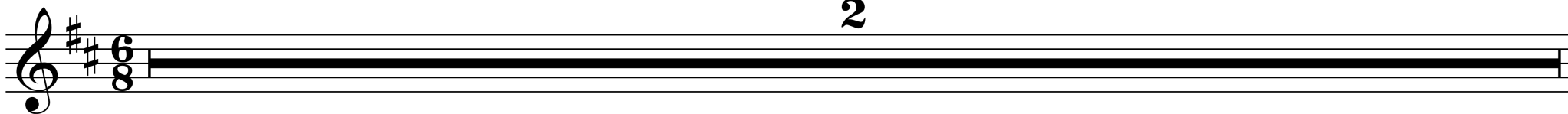


14



Brookline

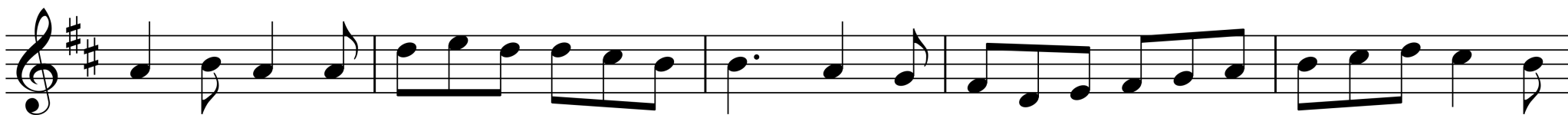
2



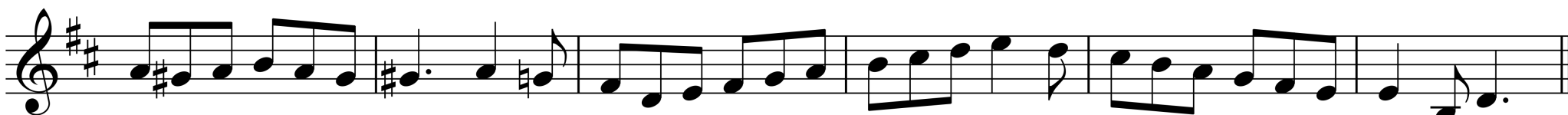
3



9

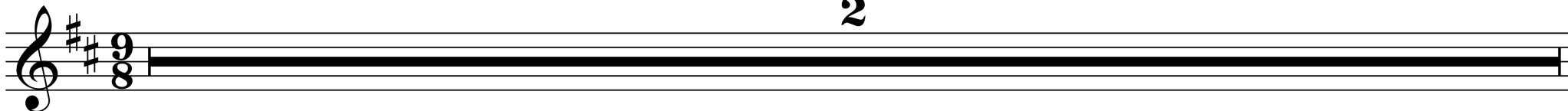


14



Blessed Redeemer

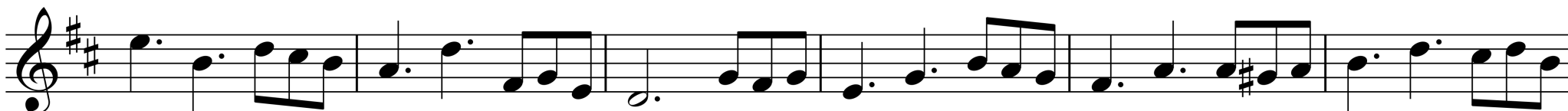
2



3



9

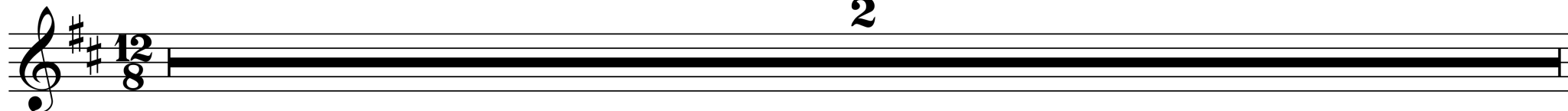


15

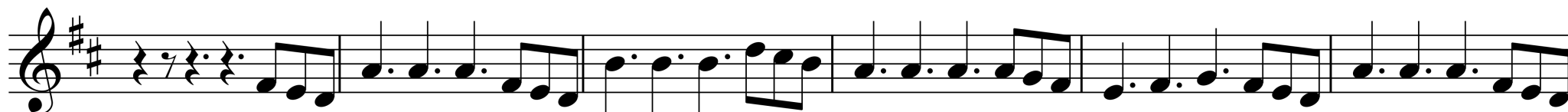


Beautiful Robe and Crown

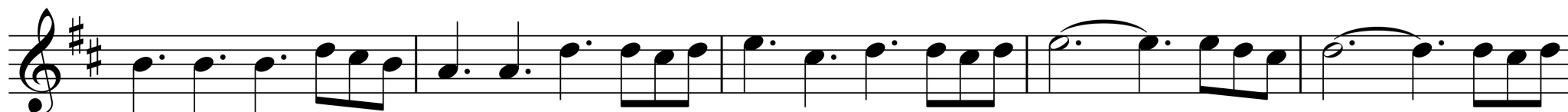
2



3



9



14



Bogota

2

Musical staff with treble clef, key signature of two sharps (F# and C#), and time signature of 12/8. The staff contains a single thick black line representing a whole rest for the duration of the piece.

3

Musical staff with treble clef, key signature of two sharps, and time signature of 12/8. It contains the first line of the melody, starting with a quarter note G4, followed by eighth notes, quarter notes, and dotted quarter notes.

9

Musical staff with treble clef, key signature of two sharps, and time signature of 12/8. It contains the second line of the melody, continuing the sequence of notes from the previous line.

14

Musical staff with treble clef, key signature of two sharps, and time signature of 12/8. It contains the third and final line of the melody, ending with a double bar line.